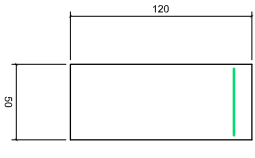
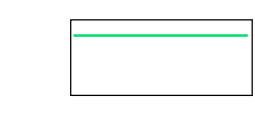


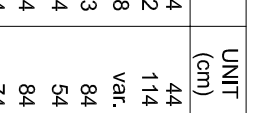
6 N1 Ø6.3 c/16 C=44



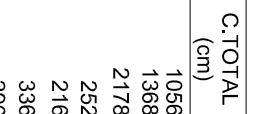
3 N2 Ø6.3 c/16 C=114



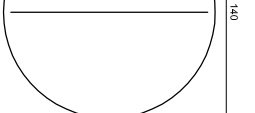
4 N6 Ø5.0 c/20 C=84



4 N7 Ø5.0 c/20 C=74



9 N3 Ø6.3 c/16 C=var.

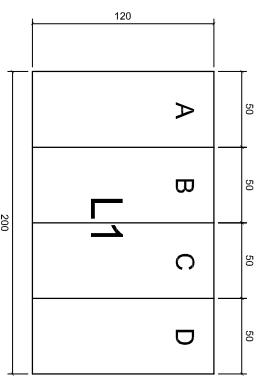


Armação positiva da laje da fossa (Eixo X) escala 1:50

Armação positiva da laje da fossa (Eixo Y) escala 1:50

RESUMO DO AÇO

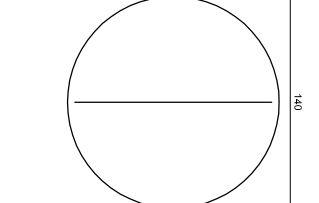
AÇO	N	DIAM	Q	UNIT (cm)	C.TOTAL (cm)
CA50	1	6.3	24	44	1056
	2	6.3	12	114	1368
	3	6.3	28	var.	2178
CA60	4	5.0	3	84	252
	5	5.0	4	54	216
	6	5.0	4	84	336
	7	5.0	4	74	296



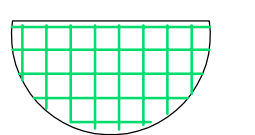
AÇO	DIAM	C.TOTAL (m)	PESO+10% (kg)
CA50	6.3	46.02	12.40
CA60	5.0	11.00	1.90
PESO TOTAL		12.40	1.90
CA50		12.40	
CA60		1.90	

Vol. concreto (Fck=20Mpa) +20% = 0.43 m³
 Área de forma total = 1.90 m²

Armação Positiva laje do sumidouro escala 1:50

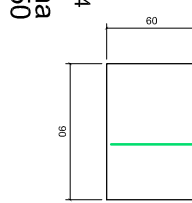
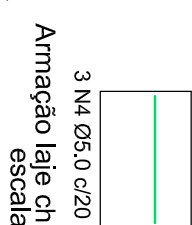
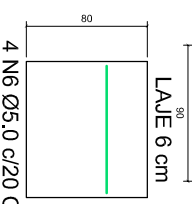


5 N3 Ø6.3 c/16 C=var.



LAJE 6 cm

LAJE 6 cm



Armação laje chicana escala 1:50

4 N5 Ø5.0 c/20 C=54